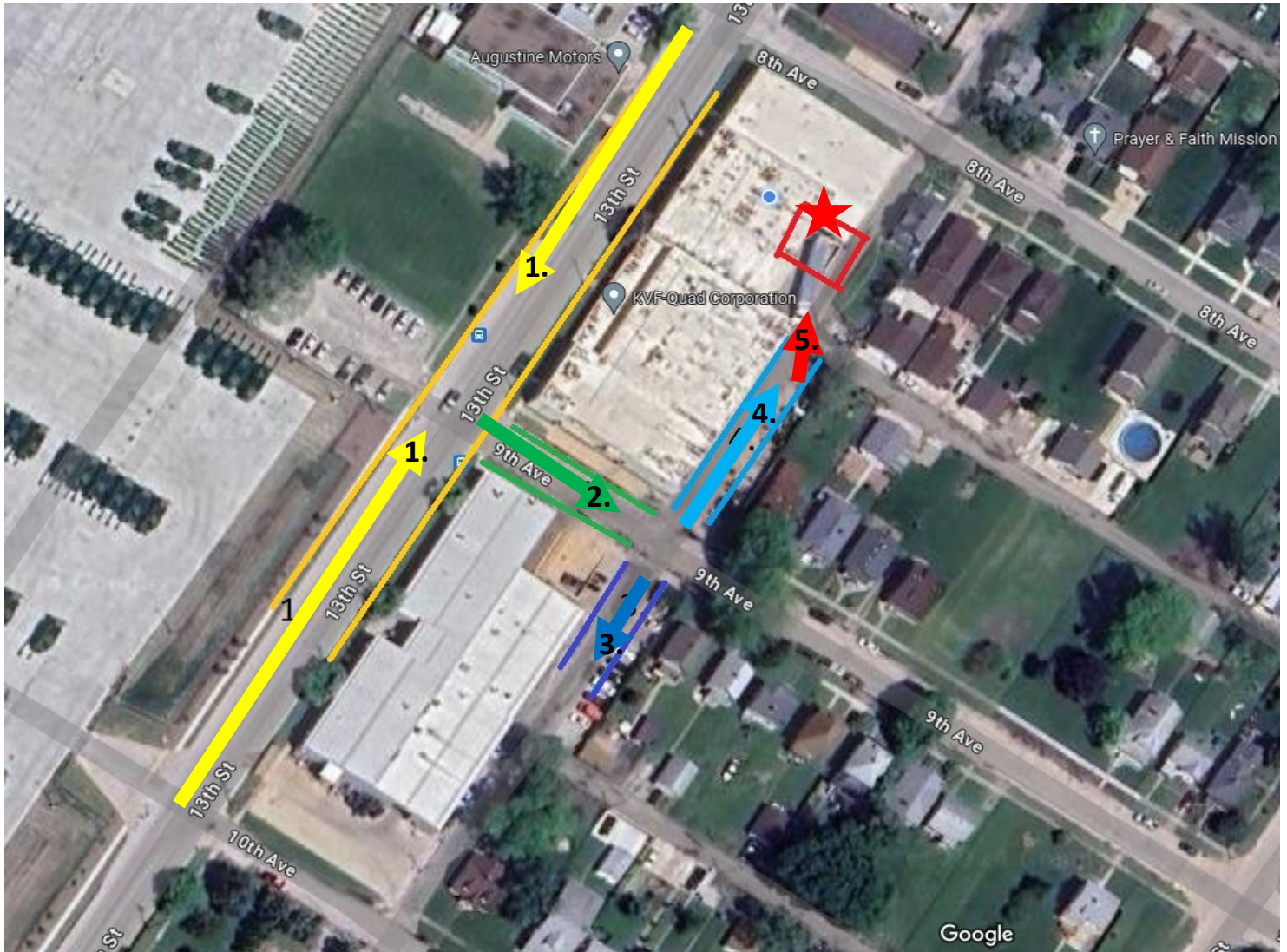


# GETTING TO THE LOADING DOCK INSTRUCTIONS

We realize our loading dock may be difficult to find if you have never been here before. Please use these instructions to make your visit here a little easier.



1. (YELLOW) Come to KVF Quad on 13th Street,
2. (GREEN) Turn onto 9th Avenue. (Between the two buildings)
3. (DARK BLUE) Turn Right into the Alley. If the loading dock ★ is empty, proceed to step 4. If another carrier is in the dock, park the truck in the alley, walk down to the Shipping Office (RED) and check in so you can be on the list to be unloaded. Once the dock is empty, go to step 4.
4. (LIGHT BLUE) Back down the alley to the loading dock.
5. (RED) Once you get to the corner of the building by the alley, angle into the dock.